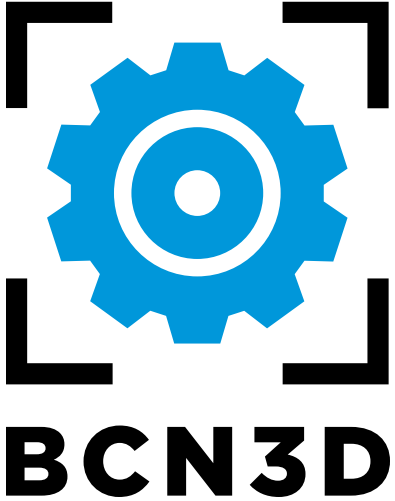


# Hotend Family

## BCN3D Technologies

Thanks to the Hotend Family and the unique IDEX system of the BCN3D Sigma you will be able to push the limits of 3D printing by combining different hotend sizes.





# BCNozzle Hotend Family

Every part has its particularities and needs, so it's wise to choose the proper hotend for each print job. The new hotend family covers a wide range of nozzle sizes allowing you to print from tiny and detailed objects to massive and solid parts in less time. It also includes a special hotend with a 0,5mm nozzle made of hardened stainless steel, ideal to print with abrasive materials.

Use a 0,3mm hotend to print the outlines and a 1,0mm hotend to print the infills and get an excellent finish in up to 3x less time! Or print a big, intricate model with 0,8mm hotend and use an 0,4mm hotend to print detailed PVA supports. You have thousands of combinations!

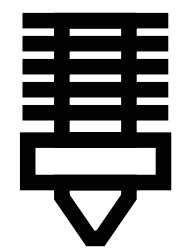
It may sound complicated, but you can download flawlessly the right printing profile, no matter the hotend configuration you have installed in your Sigma, thanks to the new Sigma ProGen.

The Hotend Family includes:

- BCNoozle 0.3mm
- BCNoozle 0.4mm
- BCNoozle 0.5mm (HP)
- BCNoozle 0.6mm
- BCNoozle 0.8mm
- BCNoozle 1mm

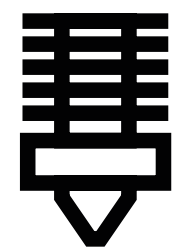


# BCNozzle Hotend Family



**0,3mm**

Print the finest and most detailed parts with the hotend with the smaller nozzle diameter available for the BCN3D Sigma. Or combine its accuracy for the outlines with bigger nozzle diameters to print infills, resulting in very detailed models at a much lower printing time.



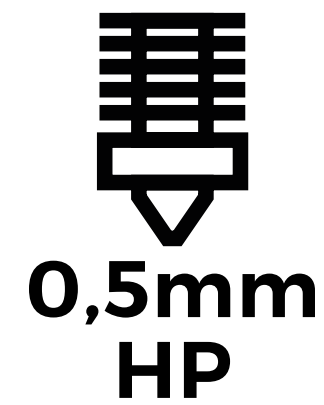
**0,4mm**

It is the standard and official hotend for the BCN3D Sigma since it can provide detailed objects at a reasonable printing speed. You can also combine its accuracy for the outlines with bigger nozzle diameters to print infills, resulting in detailed models at a much lower printing time. Or you can use it to print supports in combination with a coarser hotend.

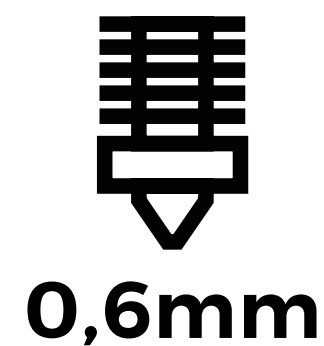


*Fully assembled full metal hotend, especially designed to ensure high performance and reliability. It is equipped with a 24V heater cartridge and a thermistor.  
Compatible with: PLA, PVA, ABS, Co-Polyesters, TPU, Nylon, Polycarbonate, wood-filled filaments.*

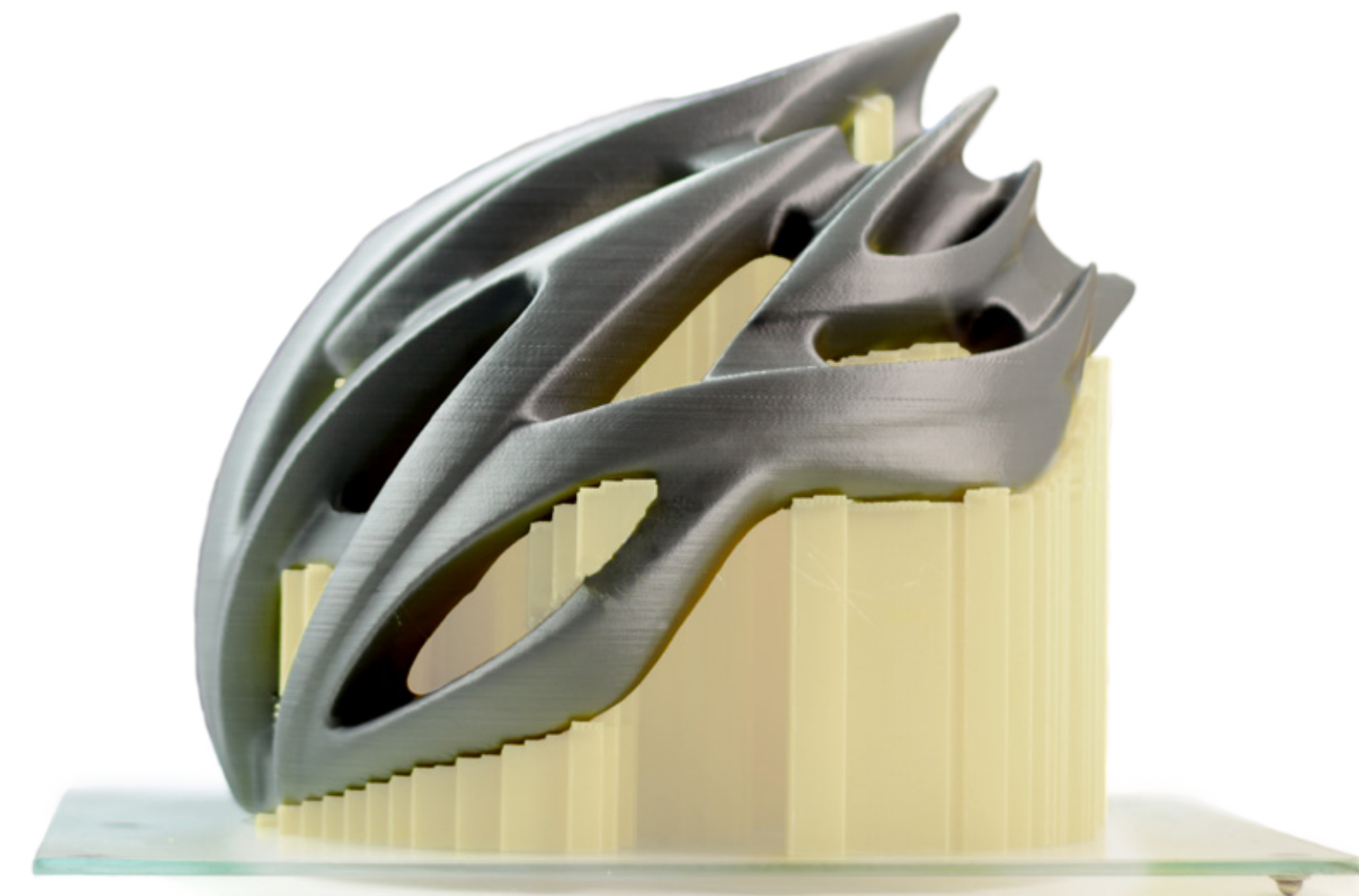
# BCNozzle Hotend Family



Thanks to its carefully engineered hardened stainless steel nozzle you will be able to print any kind of filament without a trace of wear. Its 0,5mm diameter nozzle provides a balance between printing speed and accuracy, so the 0,5 Special nozzle is a true workhorse, capable to outperform in any circumstance. You can also combine it with any other hotend and get multimaterial parts.



Print faster than with the standard 0,4mm BCNozzle without giving up a good quality finish. This is the right hotend to print with wood-filled filaments since you will postprocess the print. Combine it with any other hotend size to take profit of the IDEX system and get amazing multimaterial parts.

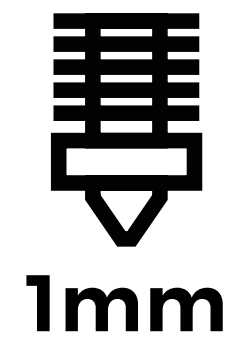


*Fully assembled full metal hotend, especially designed to ensure high performance and reliability. It is equipped with a 24V heater cartridge and a thermistor.  
Compatible with: PLA, PVA, ABS, Co-Polyesters, TPU, Nylon, Polycarbonate, wood-filled filaments.  
BCNozzle 0,5mm High Performance is also compatible with: ; Metal-filled filaments and Fibre-filled filaments*

# BCNozzle Hotend Family



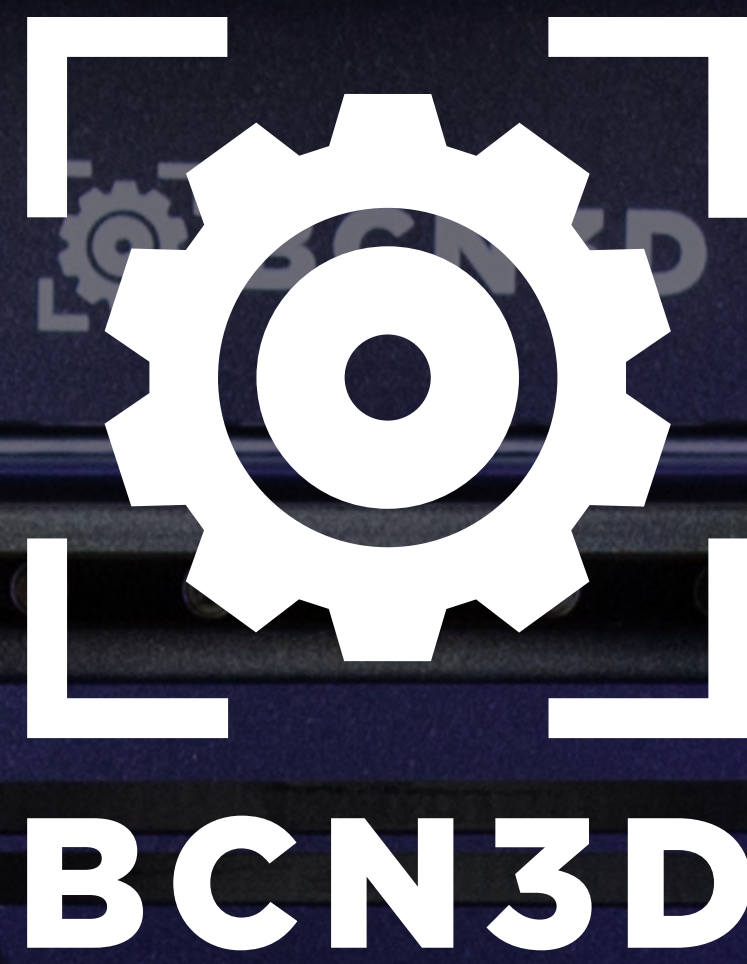
Besides the 0,8mm diameter nozzle, the hotend is mounted with a special aluminium block, which ensures a consistent high flow of molten filament. Cut down drastically the printing times and get a big model or a more robust object. Or if you need detailed surfaces, use the 0,8mm hotend in combination with a 0,4mm or 0,3mm hotend.



Besides the 1,0mm diameter nozzle, the hotend is mounted with a special aluminium block, which ensures a consistent high flow of molten filament. Cut down drastically the printing times and get a big model or a more robust object. Or if you need detailed surfaces, use the 1,0mm hotend in combination with a 0,4mm or 0,3mm hotend.



*Fully assembled full metal hotend, especially designed to ensure high performance and reliability. It is equipped with a 24V heater cartridge and a thermistor. In case you want to print massive multimaterial objects with an 0,8mm or 1,0mm nozzle, you may need to upgrade your Purge Bucket. Compatible with: PLA, PVA, ABS, Co-Polyesters, TPU, Nylon, Polycarbonate, wood-filled filaments.*



**BCN3D**

[www.bcn3dtechnologies.com](http://www.bcn3dtechnologies.com)  
C/ Esteve Terradas, 1, 08860  
Castelldefels, Barcelona  
(00) +34 934 137 088  
[info@bcn3dtechnologies.com](mailto:info@bcn3dtechnologies.com)